

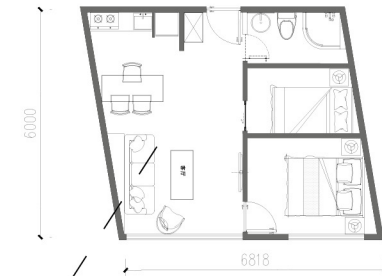
Inside of the building



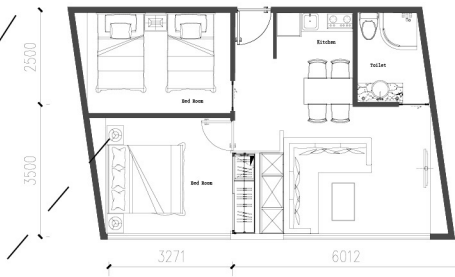
In keeping with the idea of the design, we wanted to use light building materials, namely wood, steel, bamboo, fabric, plaster and adobe. Hence the three room types shown within the buildings. Our reason for using these materials is because they are local, cheap and easy to get

hold of and to assemble. What matters most is that people can choose their preferred rooms: choice is a very important aspect of daily life. In addition, different material rooms have different dimensions and divisions of internal

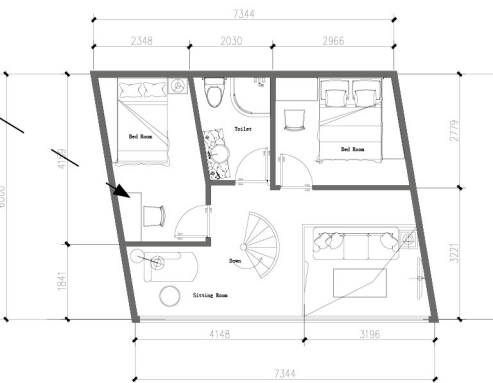
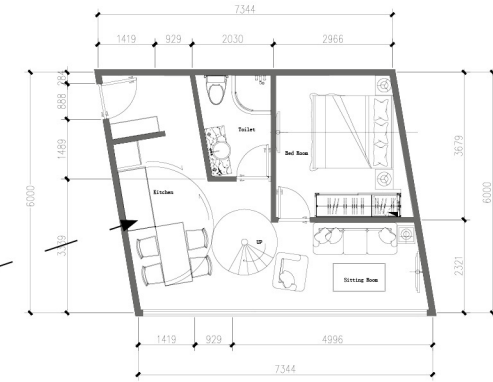
The units shown here left make up the main living area in the tower.



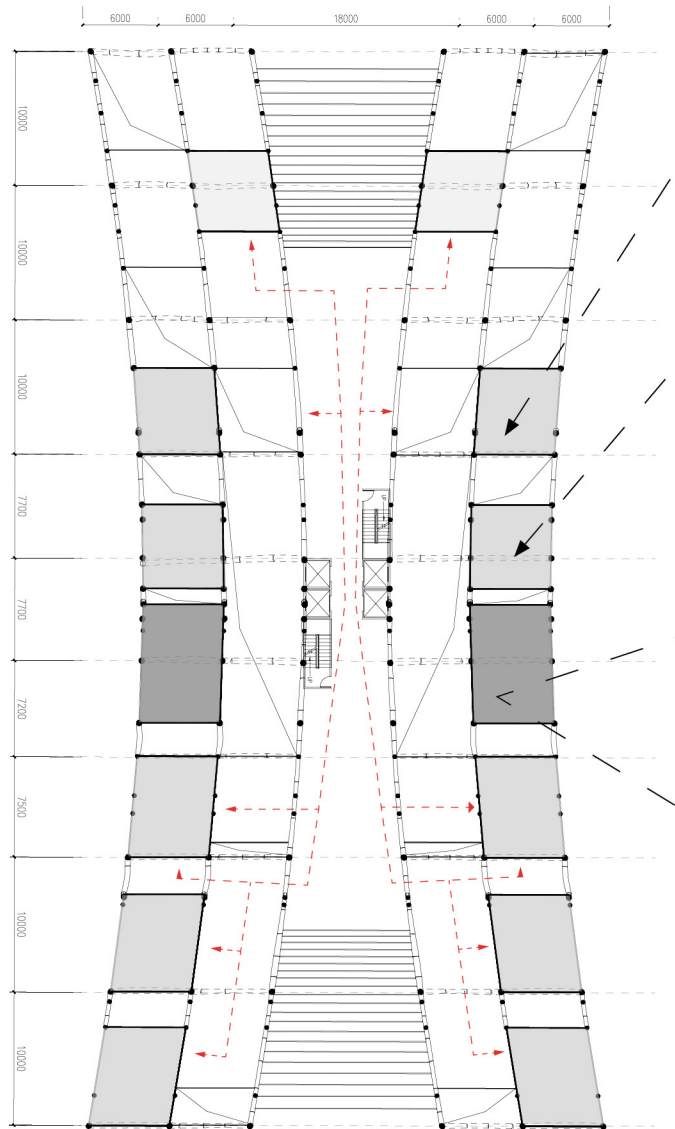
Type A 1:400



Type B 1:400



Type C 1:400



Floor Plan 1:400

Type A is the smallest and most lightweight unit type, accommodating 1-3 people. It is made from light fabrics and wood.

Type B is made of adobe and wood and can accommodate 4-6 people.

Type C, in contrast, is made of wood. This unit type is the heaviest of the units and is also a duplex unit measuring 6.6m high. As such, it offers many other possibilities.

A Type C unit can accommodate 6-7 people. Thus, the different unit options allow people to make their own choices in line with their personal preferences.

